



www.hillary.walsall.sch.uk

Hillary Primary Newsletter



November
2016

School Dates

November

14th Y6 WW1 workshop
14th Y2 Cosford trip
17th Y2 Florence Night-
ingale workshop
18th School photos

December 1st

Nursery trip 2nd
Arty Maths day whole
school 5th
INSET day 6th
Nursery Trip 9th
RS panto trip 13th
RKS panto trip 14th Y5
Theatre trip 16th Finish
for Christmas

January 2017

3rd Back to school

February

6th Book fair arrives
7th Parents evening
17th Finish for Half
term
27th Back to school

March

3rd INSET day- School
closed to children

April

7th Finish for Easter
24th Back to school

May

1st Bank Holiday
8th Y6 SATs week
26th Finish for half
term

June

June 5th Back to school

July

25th Finish for summer

Dates may be
subject to change

Weather warning- if it
snows or is icy please be
careful if you use the
Slaney Court entrance.
It will not be gritted as it
belongs to WHG.

Parent Support and Welfare team update.

Mrs Deria, our Parent Support Worker, gave birth to a baby girl at the end of October.

Rachael Stanley will be covering her post whilst she is on maternity leave. Rachael has a wealth of experience in this field because she used to work at Birchill's Sure Start.

If you want support with parenting, accessing benefits, translating or have housing concerns please call in and see our Parent and Welfare support team leader Mrs Sadie Dilloway.

You can find her in the school office.

HMI Section 8 inspection

Thankyou to those parents who spoke to inspectors during October. The full report is on the Ofsted website.

The feedback from HMI will be used to improve the school further. HMI recognised the increased capacity within school and improvements we have already made.

Asthma

Please make sure your child has their inhaler in school and that they are in date. If you are not sure Mrs Razzell will help you.

Commando Joe no longer works with us.

However we do have breakfast club every day from 8.10 am. The cost is £1.

Your child can have fruit, milk and a breakfast bar. Come along if you want to use it for your child.

Maths -After school parent's training sessions

led by Mrs Hall.

24th Nov for 6A.

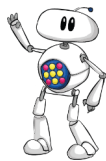
1st Dec for 6M

8th Dec for 2P

5th Jan 2017 for 2W

12th January 2JC

Please come along to learn how to help your child.



7th December

Phonics Year 1 meeting @ 8.50 am

Come and learn more about the statutory assessment arrangements for Year 1.

You will be given information regarding what the process is and how you can support your child at home.

Reading

School has appointed a librarian, Mrs Lowey, for 12.5 hours per week who will help us develop and support children's love of reading.

Keep an eye out for book competitions and special events.

Our library is well resourced and in constant use throughout the day.

Children from Year 5 and 6 are being asked to apply for school librarian positions if they wish to volunteer.



Health and Safety

During icy and snowy weather please take extra care around the playground walkways.

Mr Stanton, our caretaker will grit designated walkways around the school.

However, we are unable to grit the access via SLANEY COURT because this is not school property.

Therefore parents and children will use this at their own risk.

Should school have to be shut for snow then please listen to your local radio station for information.

A text will also be sent.



